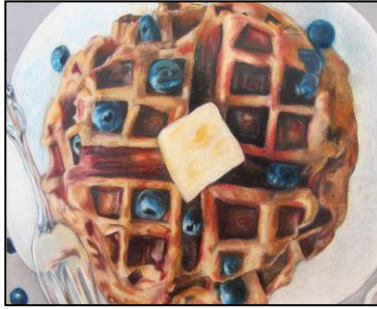


DIRECTIONS FOR PHOTO



I. Find a close up “Sweet” Photo

1. You must find a photo to use for your Photo-realistic colored pencil project. You should find a photo that goes with our theme of “Sweet” pics.
2. It must be a close up, detailed, clear photo
3. You can use one of the photos I have provided, use your own photo, or search the internet. But it must be CLOSE UP, CLEAR, & DETAILED
4. If you want to use a photo I have provided, browse the photos on my website and save one to your Documents or Pictures folder
5. If you find one you like, then single **right click** on it to “**Save image as...**”
6. Choose your “**Pictures**” or “**Documents**” folder and click “**Save**”
7. If you want to use a photo other than the ones on my website, then **use your own photo** or **search the internet using Google Images** to find one and save it in your “Pictures” or “Documents” folder.

How to ADD the GRID (and Edit if necessary...)

1. “Grid Drawing Tool” - Go to <http://www.griddrawingtool.com/> and follow the steps here to put a grid on your photo
2. **Step 1:Upload** “Choose File”
 - a. Find your photo from “Pictures” or “Documents”
3. **Step 2:Rotate**
 - a. Do you need to **rotate** the image?
 - i. If so, then follow directions to do this step. If not skip to Step 3
4. **Step 3:Crop**
 - a. Do you need to **crop** the image?
 - i. If so, then follow directions to do this step. If not skip to Step 5
5. **Step 5: Grid**

- a. Make sure there is a check in the box **Keep boxes square**
- b. Change **Line Style color** to one that will contrast the colors of your image – so do not use black or white lines
- c. Change or leave **Line Style** to **Pixel 1 or 2**
- d. **“Boxes Wide” depends on if your photo is a square, vertical rectangle or a horizontal rectangle.**

Choose based on your photo’s shape... **You need to have approximately 90 boxes overall.** So after you “Apply Grid” multiply number wide by the number of boxes down to find your total number of boxes.

9 boxes wide



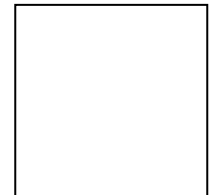
OR

12 boxes wide



OR

10 boxes wide



- e. Enter either 9, 12, or 10
 - f. Click **“Apply Grid”** to see changes
6. Adjust if necessary
 7. Click **“Download”**

PRINTING

1. Go back to Windows start button and choose “Computer” then look on the left under “Favorites” for **“Downloads” folder**
2. Open your **Downloads folder** and right click on your image, choose **Copy**
3. Open your **“My Pictures” folder** and right click to **Paste** the photo there
4. Right click on the photo file and choose **“Print”**
5. In “Print Pictures” pop up box choose **5 X 7 in. OR 8X10 in.** layout on the right
6. **Un-check** the mark for **“Fit picture to frame”** box on the bottom
7. Choose Printer→**“Color Lexmark C748”**
8. **Click “Print”**
9. ****If its blurry or pixelated, use a new photo****
10. Now you will also **print a second copy of your photo in color *without the grid*** to use as a reference during coloring**

- a. Find the photo in your “My Pictures” folder
- b. Right click on the photo file and choose “**Print**”
- c. In “Print Pictures” pop up box choose **5 X 7 in.** or **8x10 in.** layout on the right
- d. **Un-check** the mark for “**Fit picture to frame**” box on the bottom
- e. Choose Printer→“**Color Lexmark C748**”
- f. **Click “Print”**

11. Now you will also **print a second copy of your photo in color *without the grid*** to use as a reference during coloring**
- a. Find the photo in your “My Pictures” folder
 - b. Right click on the photo file and choose “**Print**”
 - c. In “Print Pictures” pop up box choose **5 X 7 in.** or **8x10 in.** layout on the right
 - d. **Un-check** the mark for “**Fit picture to frame**” box on the bottom
 - e. Choose Printer→“**Color Lexmark C748**”
 - f. **Click “Print”**