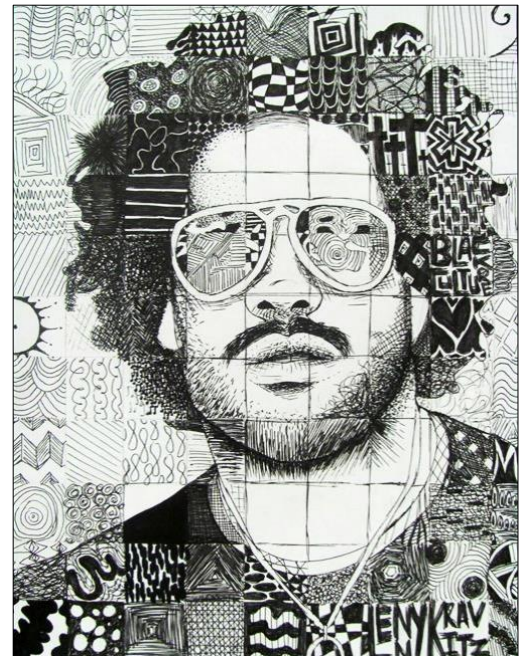


GETTING A PHOTO

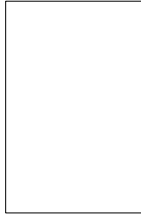
“BALLPOINT PEN DOODLE PORTRAITS”

1. Open Chrome. Search on Google Images for a celebrity or animal portrait
 - a. Put in the person or animal name and **use the words “black and white” and “photography”**
 - b. EXAMPLE:
 - i. “Derek Jeter black and white photography”
 - ii. “Tiger black and white photography”
2. Use **“Search Tools”** to change **“Size” to “Large”**, and color to **black & white if you didn’t search it as black & white.**
3. Choose a close up portrait of their face with a good range of values from light to dark. Look for good contrast, dark darks and light lights and a range of greys.
4. Once you find your image, Right click, choose **“Open Image in new tab”**
 - a. If its blocked then choose an alternative image
 - b. Then RIGHT click and **“Save Image as...”**
 - c. Save it to your Documents or Pictures folder
5. Then go to the **Grid Drawing Tool** website at griddrawingtool.com
6. Follow **Step 1: Upload your image**

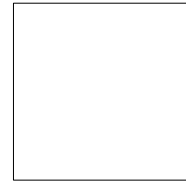


7. Skip to **Step 5:Grid**

- a. Make sure there is a check in the box **Keep boxes square**
- b. Change **Line Style** color to one that will show up well over your image
- c. Change **Line Style** to **Pixel 1**
- d. Now “**Boxes Wide**” depends on if your photo is a vertical rectangle or a horizontal rectangle...
- e. **Choose either 10 boxes wide or 16 boxes wide**



- f. If your image is a **square**, you will want to make it 13 boxes wide
- g. Enter appropriate number
- h. Click “**Apply Grid**” to see changes



8. Adjust if necessary

9. Click “**Download**”

10. On the bottom of the screen, where the file pops up, **click the ^ icon** and choose “Show in folder” (it will be in your “Downloads” folder)

PRINTING

1. Once in your **Downloads folder**, right click on your image, click and drag the image into your “Pictures” folder
2. Open your “**Pictures**” folder, Right click on the photo file and choose “**Print**”
3. In “Print Pictures” pop up box choose Full Page photo layout on the right
4. Un-check the mark for “**Fit picture to frame**” box on the bottom
5. Choose Color Lexmark C748 Printer
6. **Click “Print”**
7. ****If its blurry or pixelated, pick a new photo****